

*The ocean
is known
to be the
primary
source of
life...*



ID-algTM

Dive into the ideal source of well-being

 **Bio serae**
Laboratoires S.A.

Composed of a premium brown seaweed extract, **ID-alG™ is a natural ingredient intended to keep one fit and well**

**Full spectrum
Weight-management
support**

- Inhibition of 2 digestive enzymes (amylase & lipase)
- Activation of thermogenesis

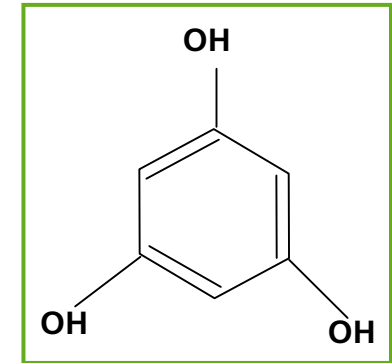
**Natural source
of vital nutrients**

- Marine Mineral richness
- A unique category of polyphenols



1- Original Marine Polyphenols

Seaweeds develop defense mechanisms during stress conditions, by synthesizing specific polyphenols called **phlorotannins**, which are **derived from phloroglucinol**.



Phloroglucinol molecule (phlorotannins monomer)

ID-alG™ polyphenol content > 50%
(Folin eq. Phloroglucinol)

Interest of this unique category of polyphenols :

- **powerful anti-lipase and anti-amylase effects**
- **biochemical structure differentiated** from ground plant polyphenols
- **biological properties** : *protection against UV radiation, antioxidant, anti-microbial, effect on cardiovascular disease prevention (in-vitro study)*

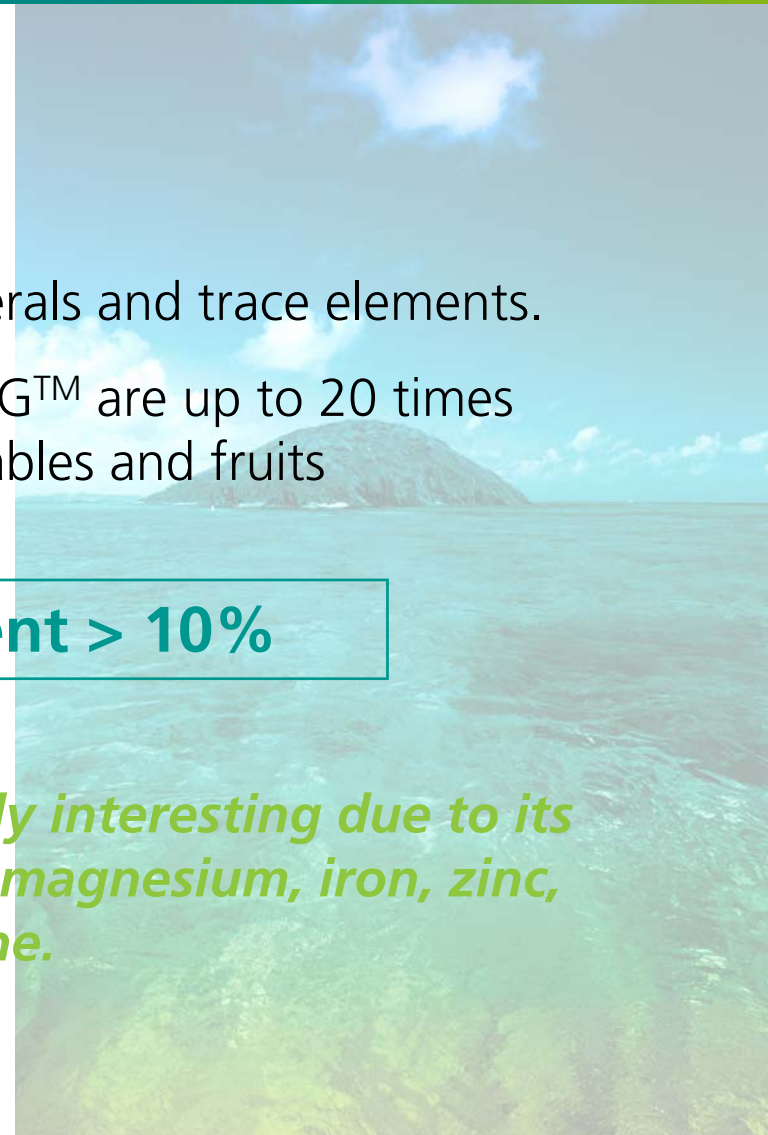
2- Marine Mineral richness

ID-alG™ is particularly rich in essential minerals and trace elements.

Some of the trace elements found in ID-alG™ are up to 20 times more concentrated than in vegetables and fruits

ID-alG™ minerals content > 10%

This marine mineral intake is particularly interesting due to its original diversity : calcium, potassium, magnesium, iron, zinc, selenium and iodine.



**ID-alG™ offers an energetic balance regulation
for an optimized weight-control solution**

1st step : Control of the caloric intake

ID-alG™'s active ingredients **inhibit both alpha-amylase & lipase activity**, and contribute to reduce **carbohydrate & fat assimilation**.

2nd step : Increase of the energy consumption

ID-alG™'s iodine content enables **natural fat reduction and thermogenesis**

• Inhibition of digestive enzymes

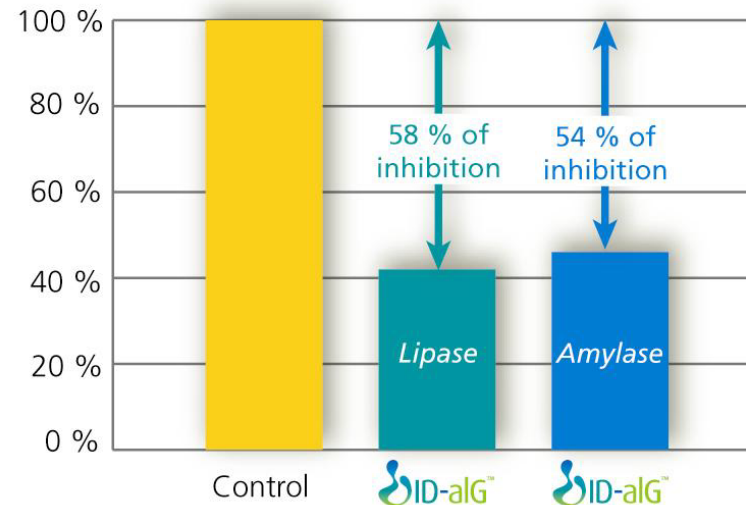
ID-alG™'s active compounds inhibit amylase and lipase activity, thereby reducing carbohydrate and fat assimilation.

ID-alG™ helps to reduce :

- **lipase activity by more than 50%.**

- **alpha-amylase activity by more than 50%.**

In vitro test : reduction of enzymes activity compared to control

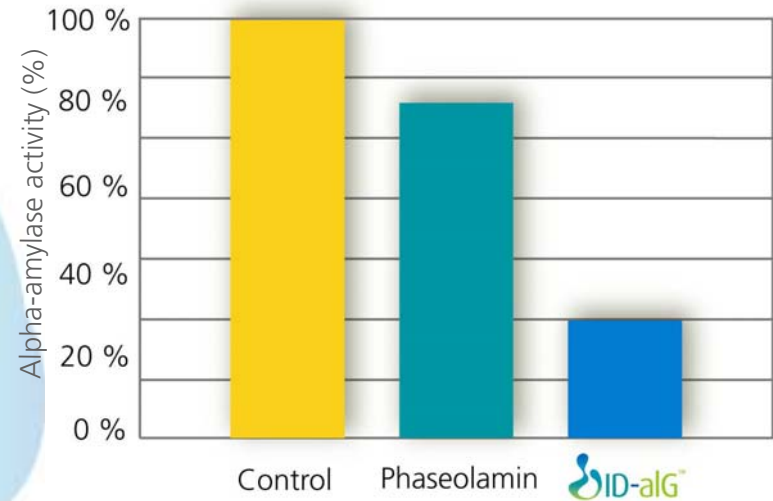


⇒ **ID-alG™** activity is compared to the one of branded ingredients

- Anti-amylase activity

Comparative test with branded white kidney bean extract (Phaseolamin) (pancreatic alpha-amylase),

⇒ **ID-alG™** is 3.5 more efficient than Phaseolamin



In vitro test realized by Bio Serae Laboratories S.A.

- Anti-lipase activity

Comparative test with a prescription medication dedicated to weight-loss program :

⇒ **In vitro tests have shown a competitive lipase inhibition activity of ID-alG™**

Results to be confirmed on pancreatic lipase.

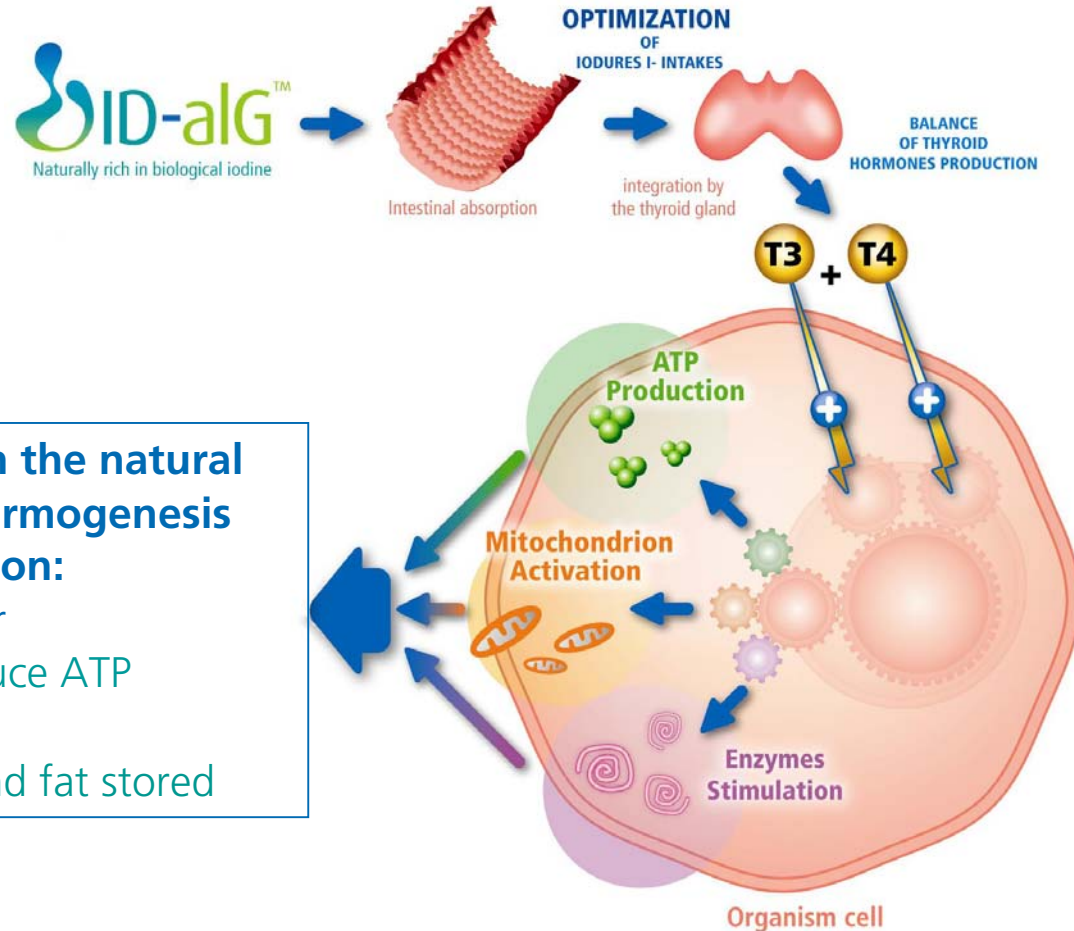
• Activation of thermogenesis

ID-aIG™ is naturally concentrated in iodine.

This trace element plays an essential role in metabolism by regulating the natural synthesis of thyroid hormones.

Hormones T3 and T4 are involved in the natural General metabolism activation, thermogenesis stimulation and fat reduction:

- = activation of energy producer
- ↗ mitochondrion activation to produce ATP
- = increase of "fuel" needs
- ↗ Consumption of carbohydrates and fat stored



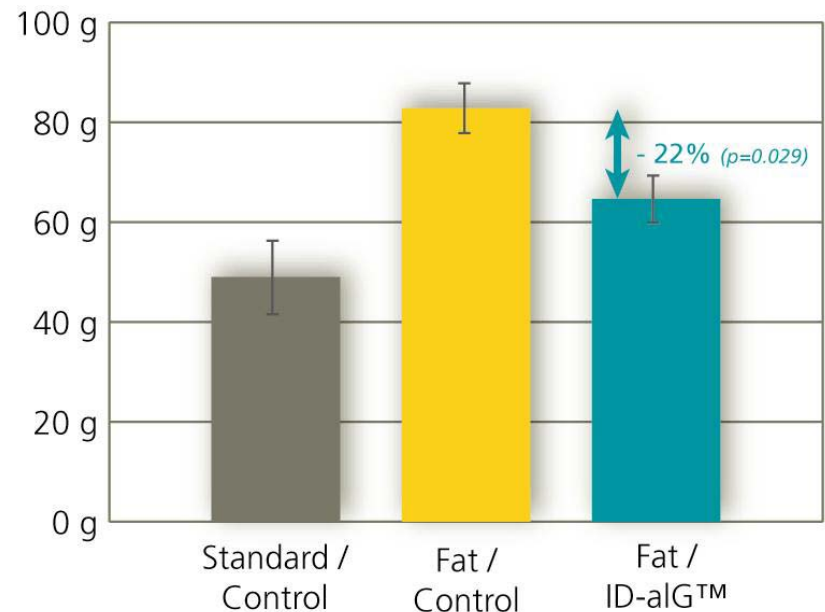
The latest study conducted on rats confirms these weight-management properties.

⇒ *In vivo* test conducted to evaluate the effect of ID-alG™ on weight evolution of rats subject to obesity induction.

1st result :

ID-alG™ helps to reduce by near than 22% the weight gain of rats fed with fat-enriched meal (p= 0.029)

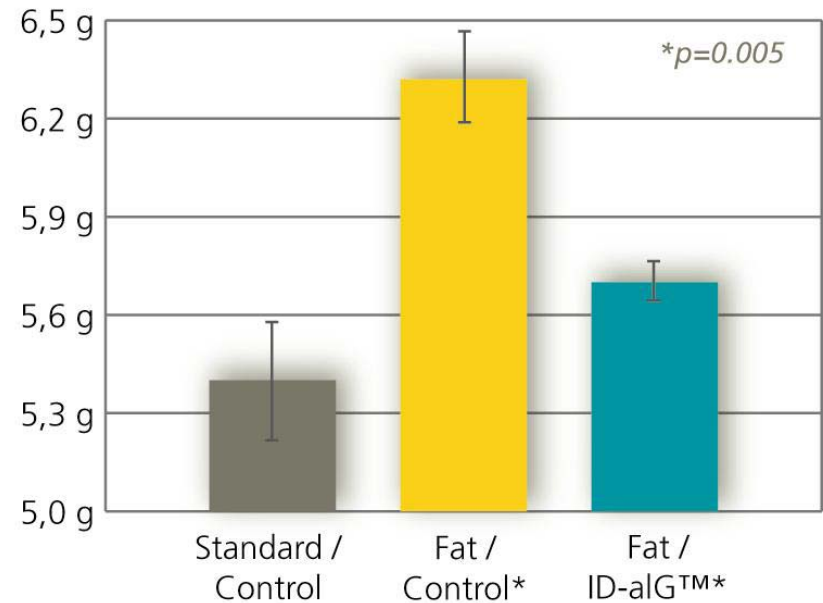
In vivo study on rats : weight gain between D0 & D64



2nd result :

ID-aIG™ enables to limit body fat gain usually favored by fat-enriched meals
($p= 0.005$)

In vivo study on rats : body fat mass at D64 (g)



By decreasing fat and carb assimilation, ID-aIG™ helps to control caloric intake, reducing thus fat storage.



- A food grade product made from seaweed authorized as edible ingredient in France
- Seaweed extract produced thanks to a gentle water extraction process
- ID-alG™ is well tolerated (not suitable in case of iodine allergy)



Fats and carbohydrates digestion is principally located in the intestine.

To optimize the two inhibition actions of ID-alG™, Bio Serae has developed an efficient gastro-resistant formulation.



⇒ **Prefer a targeted action,
and choose ID-alG™
enteric coated**





↪ 100% green and natural

↪ Gentle water extraction process

↪ Inhibition activity of the 2 main digestive enzymes (lipase and alpha-amylase)

↪ Efficiently tested *in-vitro* and *in-vivo*

↪ More efficient than leading competitive products

↪ Original antioxidant content

↪ A healthy mineral supplement

+ A specific enteric coated formulation developed by BIO SERAE for a targeted action

*The ocean
is known
to be the
primary
source of
life...*



ID-algTM

Thank you for your attention !

 **Bio serae**
Laboratoires S.A.